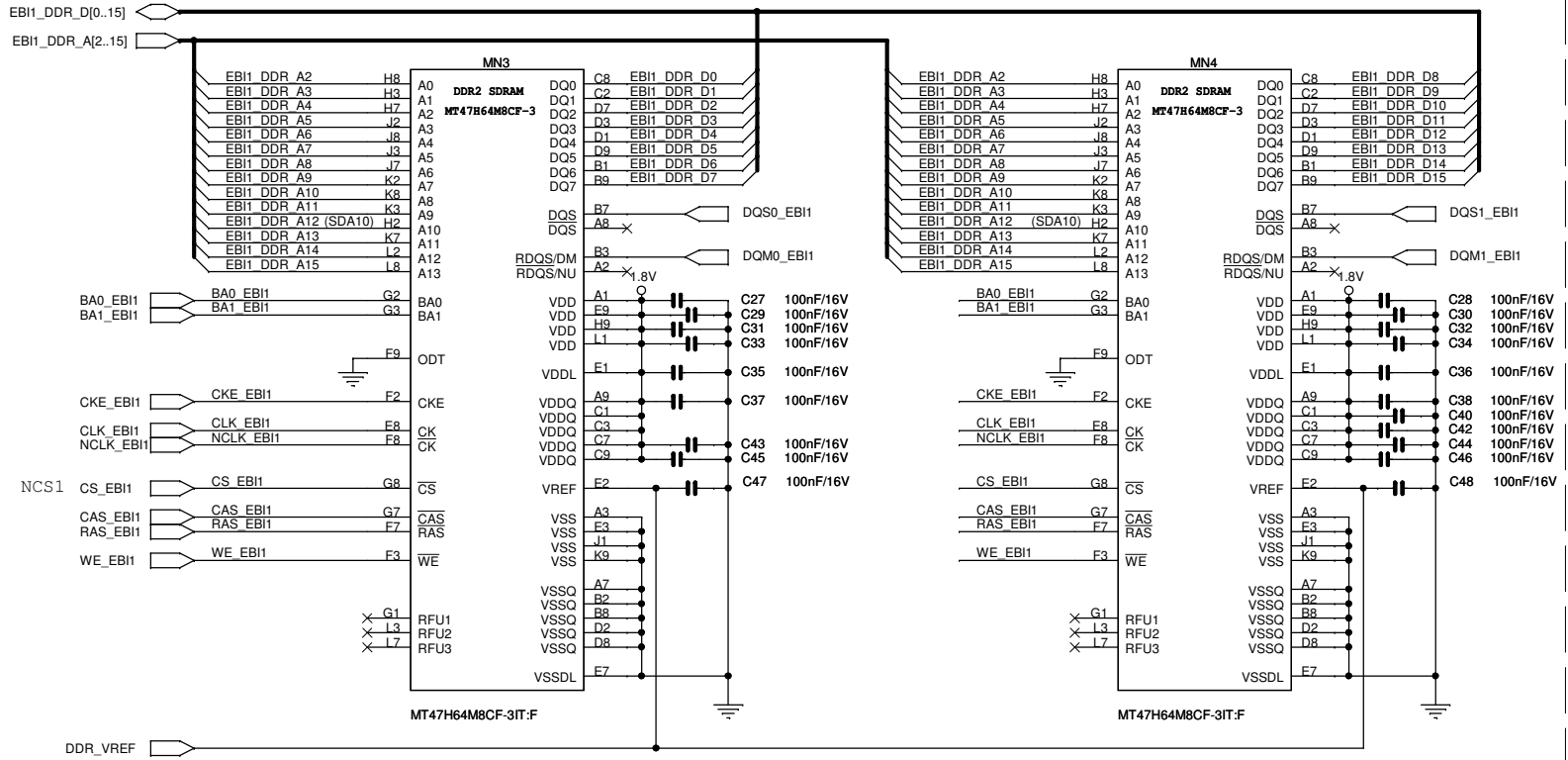
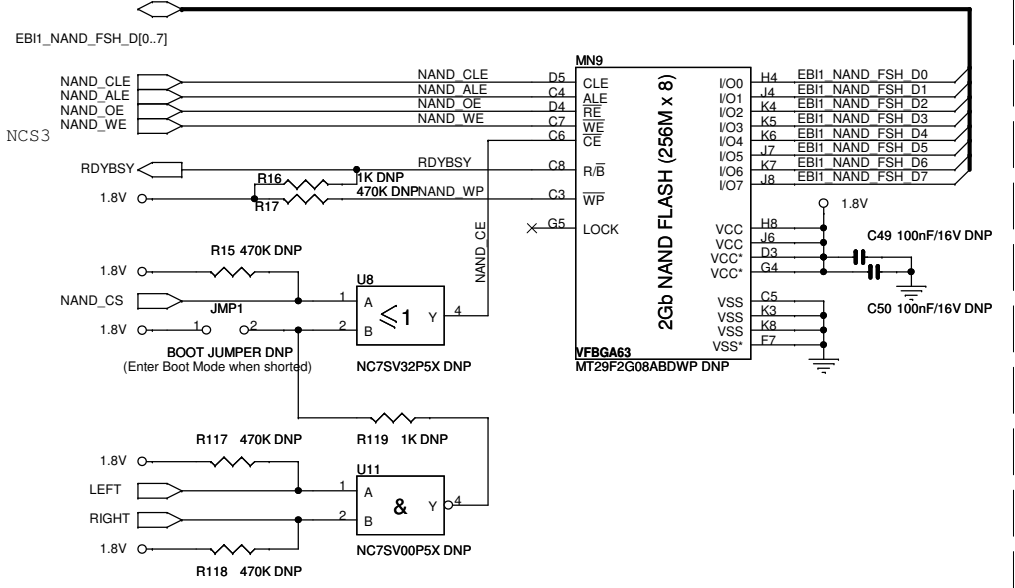


© www.mini-box.com 2010		Csernath Géza 2010	
Title picoPC - EBIO DDR2 Memory Block			
Size	Document Number picoPC 1.1f	Rev 1.1f	
Date:	Sunday, February 27, 2011	Sheet	3 of 9

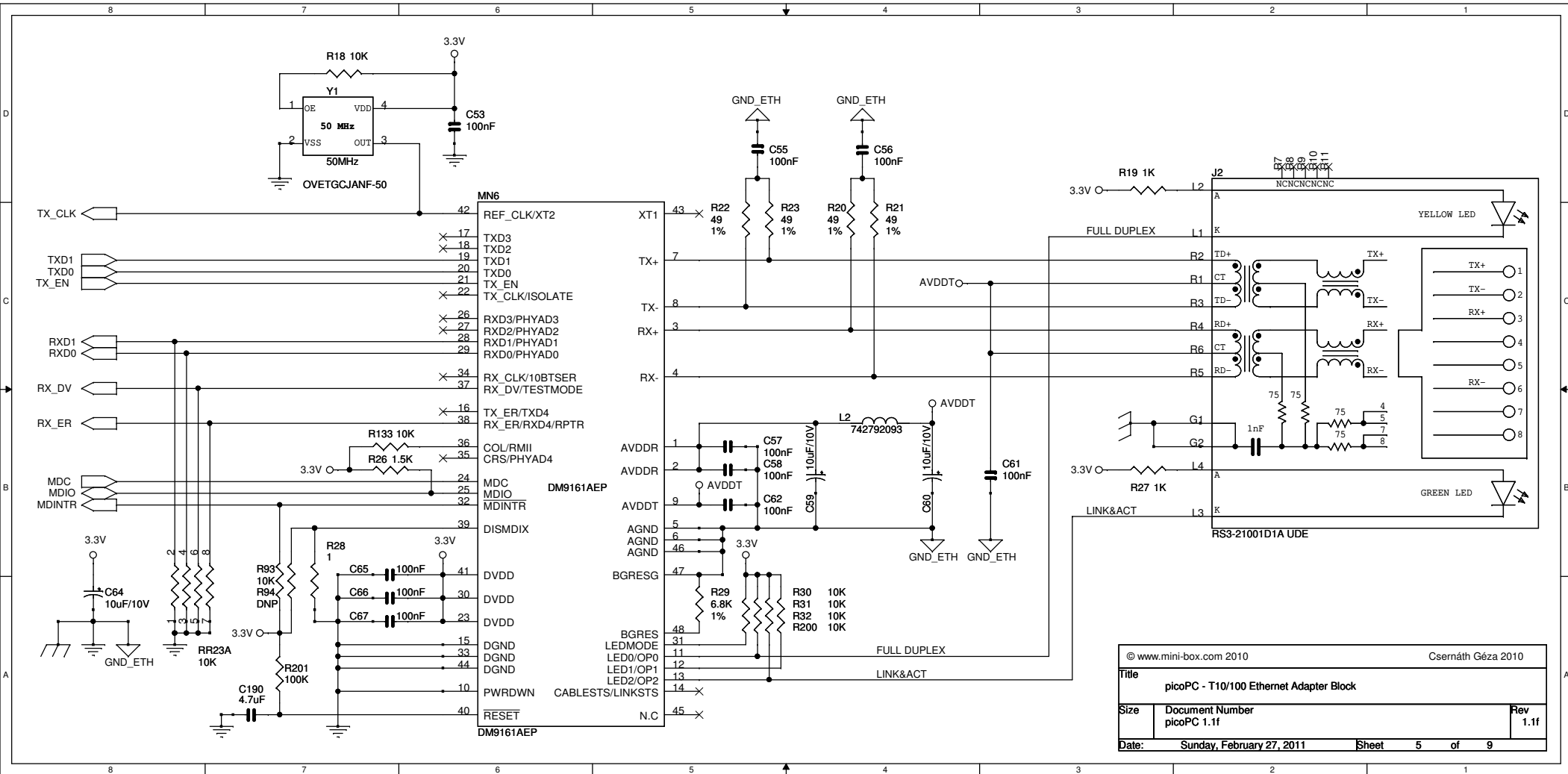


EB11 DDR2 SDRAM BANK1 - 128MB, 16bit

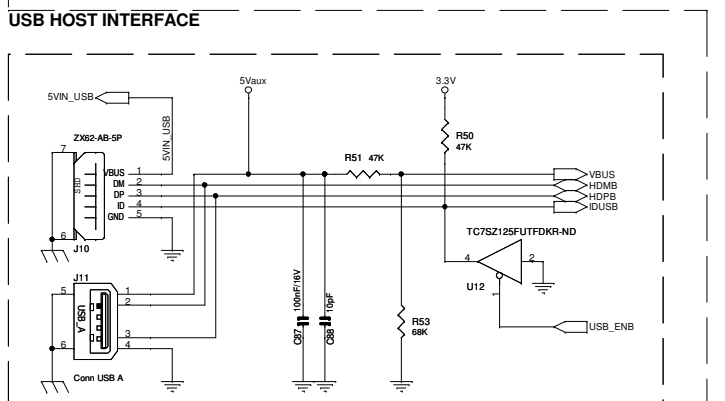
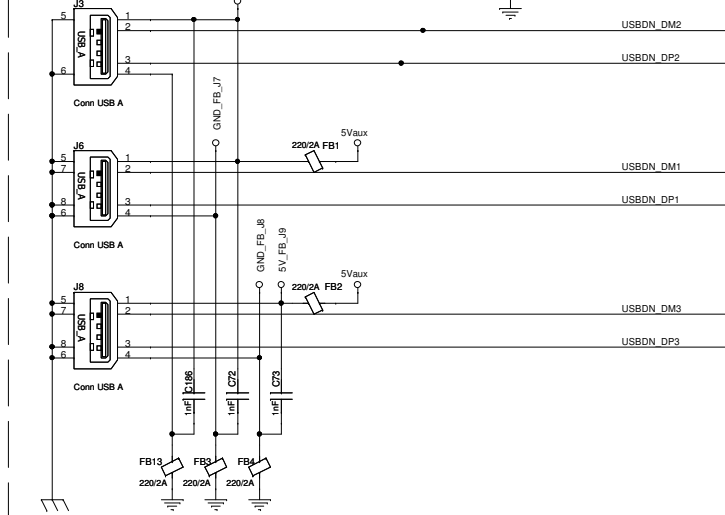
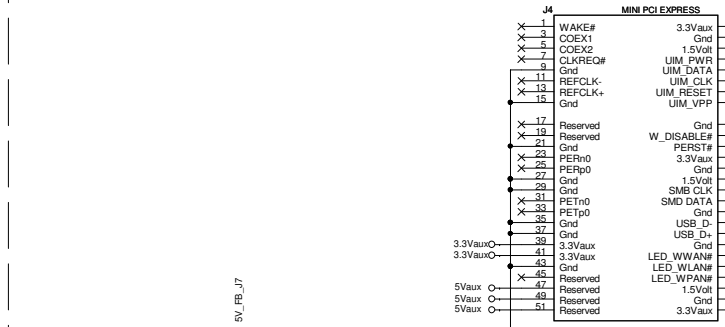


EB11 NAND FLASH - 256MB, 8bit

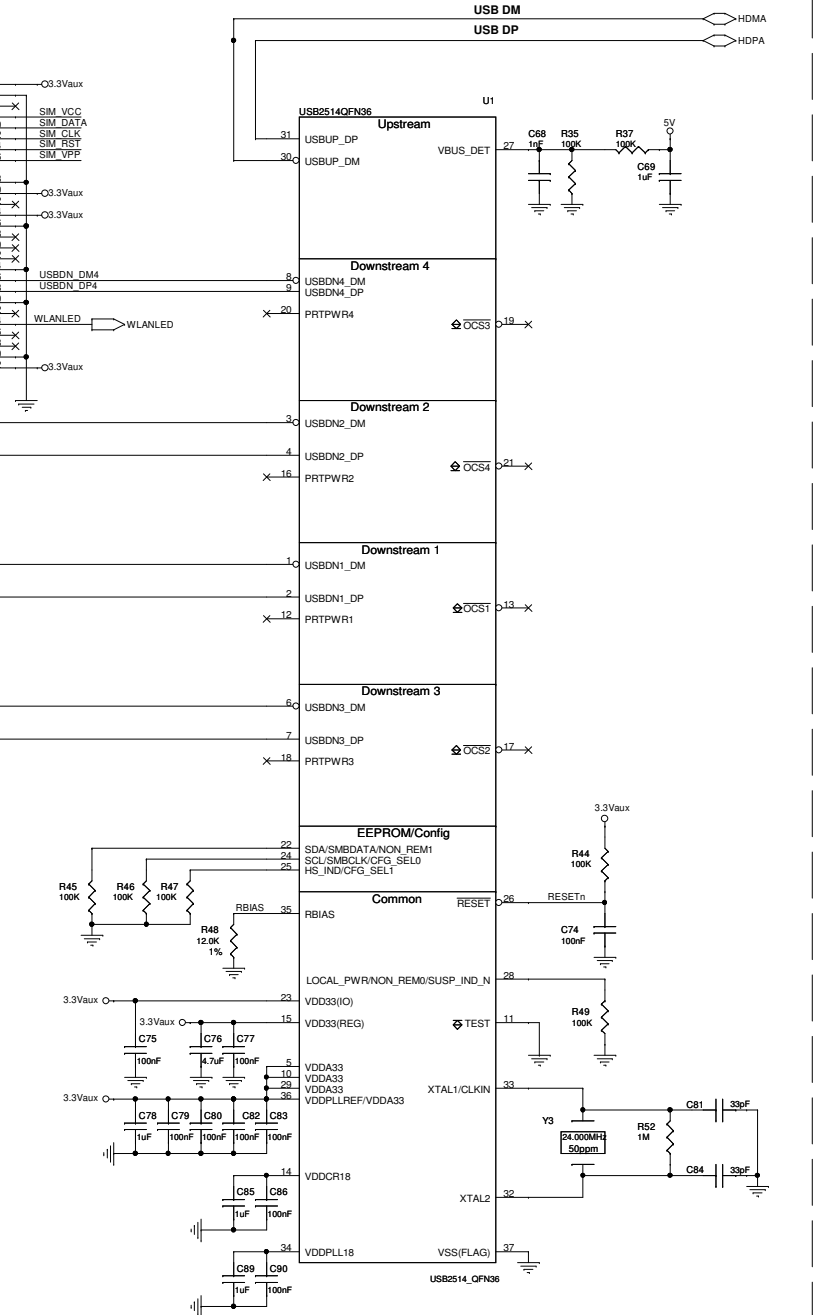
© www.mini-box.com 2010		Csernáth Géza 2010	
File: picoPC - EB11 DDR2 Memory Block			
Size:	Document Number:	Rev:	
picoPC 1.1f		1.1f	
Date:	Sunday, February 27, 2011	Sheet:	4 of 9



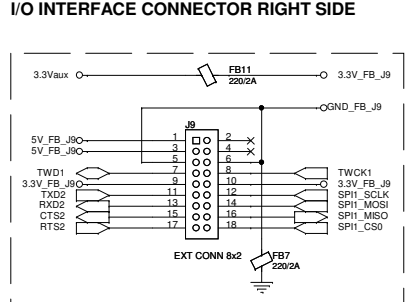
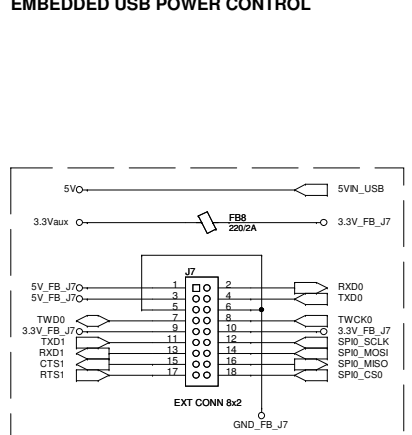
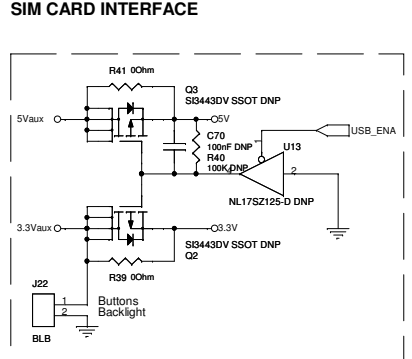
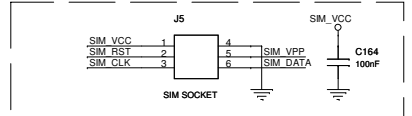
© www.mini-box.com 2010		Csernath Géza 2010	
Title picoPC - T10/100 Ethernet Adapter Block			
Size	Document Number	Rev	
	picoPC 1.1f	1.1f	
Date:	Sunday, February 27, 2011	Sheet	5 of 9



USB HOST INTERFACE

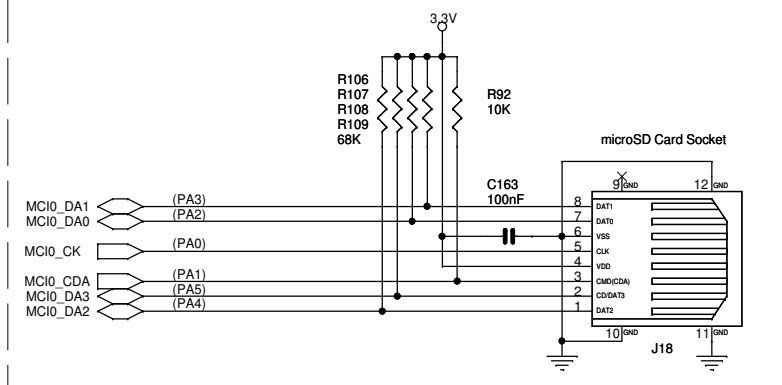


USB HOST INTERFACE

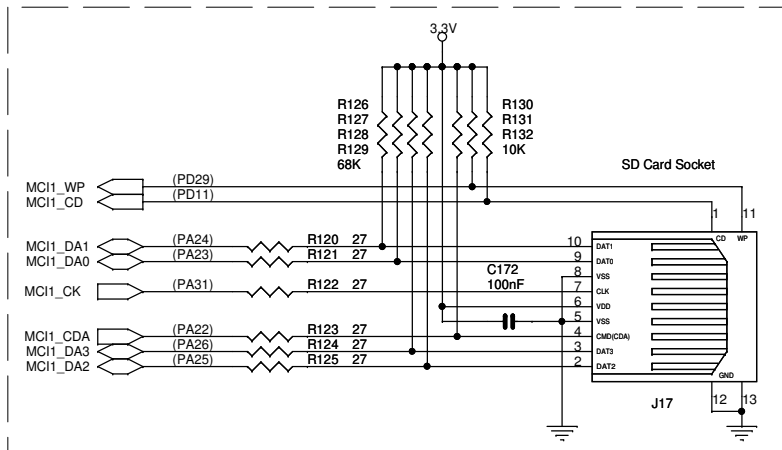


© www.mini-box.com 2010 Csernák Géza 2010

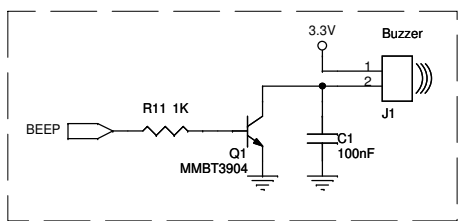
File	picoPC - I/O & Communication Ports		
Size	Document Number	picoPC 1.11	Rev 1.11
Date:	Sunday, February 27, 2011	Sheet 6 of 9	



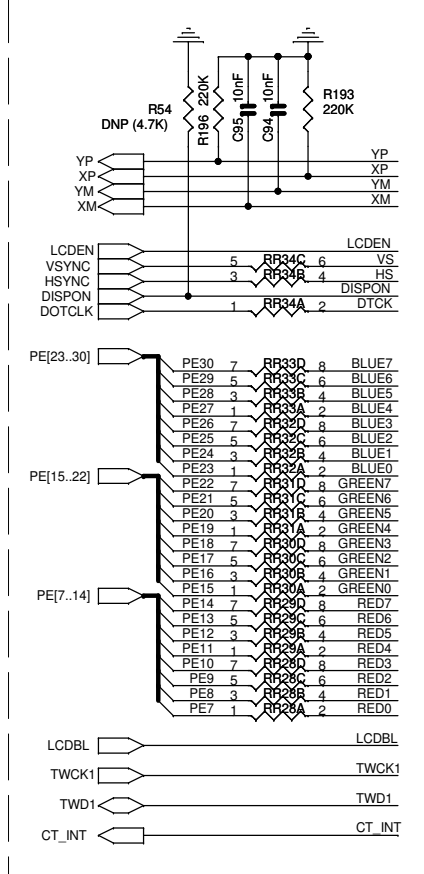
MicroSD CARD INTERFACE - MCI0 (Bootable)



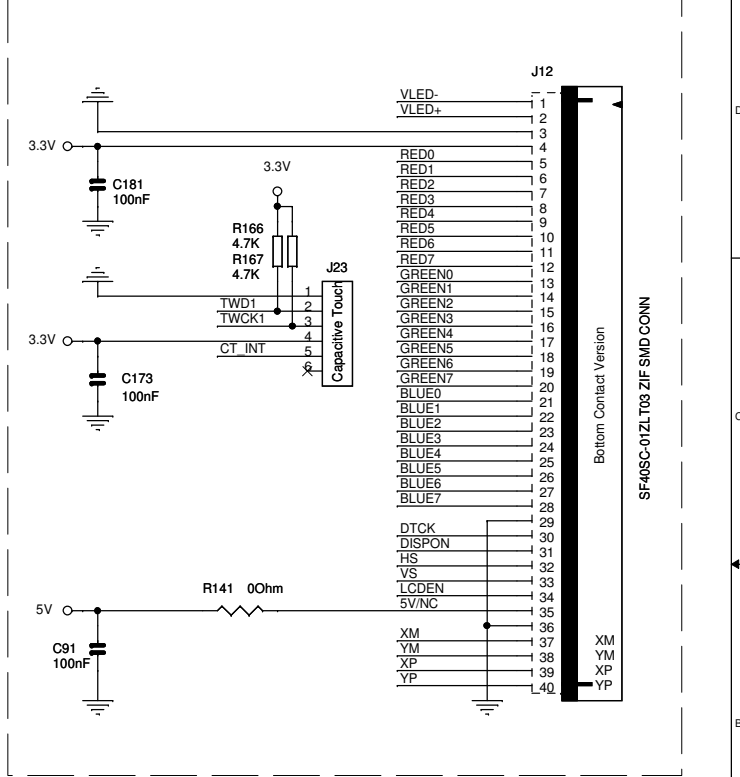
SD CARD INTERFACE - MCI1 (NON-Bootable)



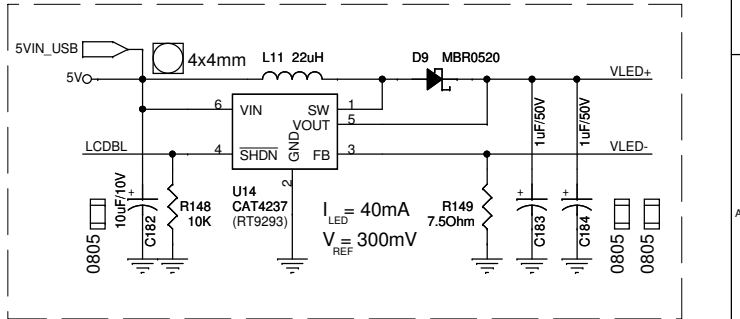
BEEPER



LCD Data/Cmd.-line Imp. Adaptor

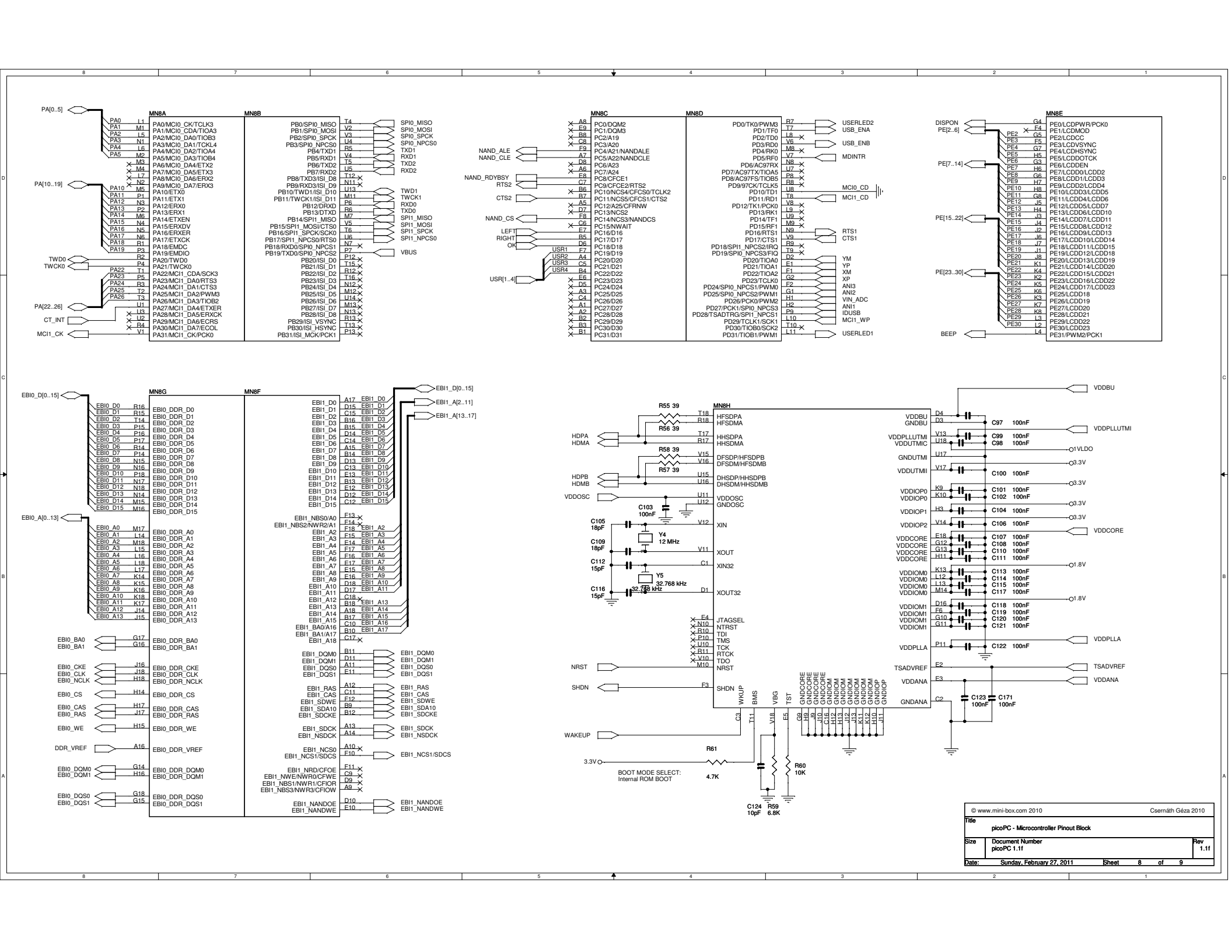


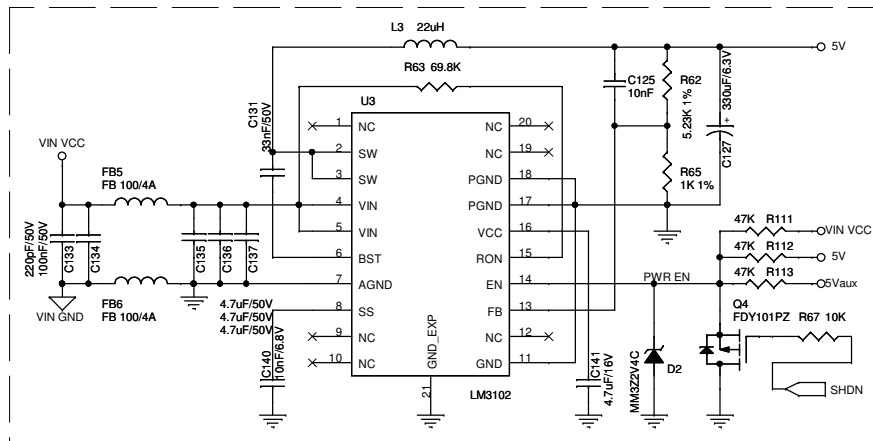
LCD Module Connector



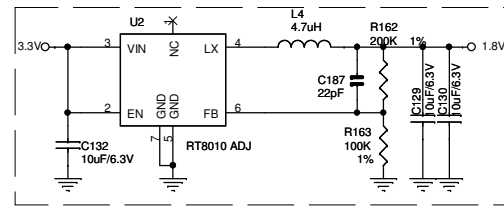
Backlight Power Supply (40mA Booster)

© www.mini-box.com 2010		Csernáth Géza 2010	
Title picoPC - 320x240 24bit color LCD - LCD & Backlight Connector Block			
picoPC - MicroSD/SD Card Interface and Beeper			
Size	Document Number	Rev	1.1f
Date:	Sunday, February 27, 2011	Sheet	7 of 9

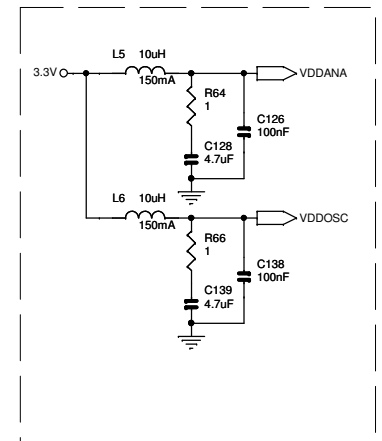




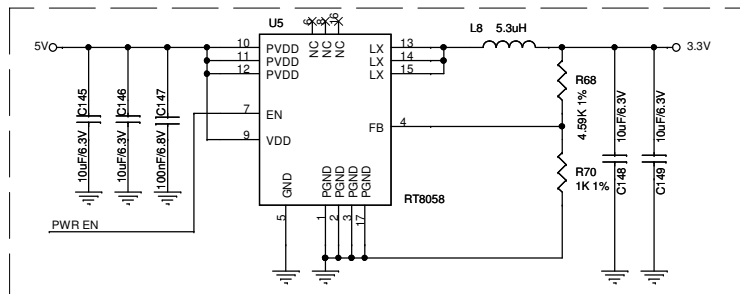
Main Power Supply (5V Buck)



Memory Core Power Supply (1.8V Buck)



3.3V Distribution

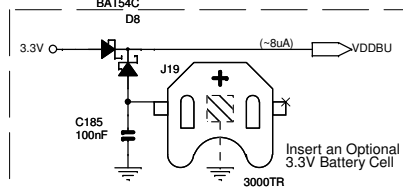


Logic Power Supply (3.3V Buck)

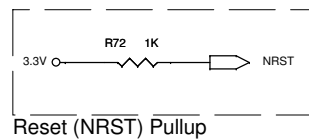
VIN (6-42V) — Main VCC (5V) — Backlight VCC (16.5V)

- Logic VCC (3.3V)
- Memory VCC (1.8V)
- CPU Core VCC (1V)

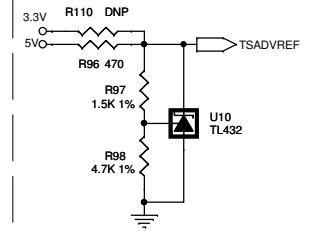
- POWER LED
- VLAN LED
- BOOTING/STATUS LED
- USER LED



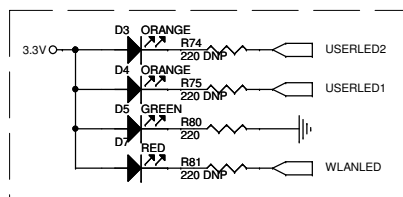
Battery Backup (3.2V)



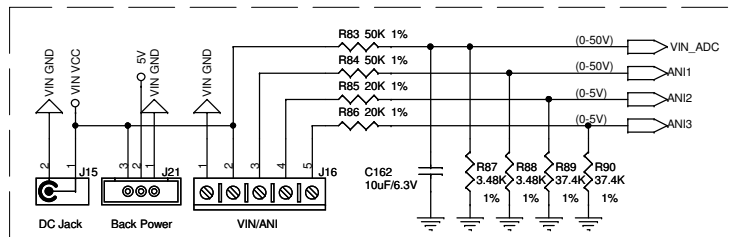
Reset (NRST) Pullup



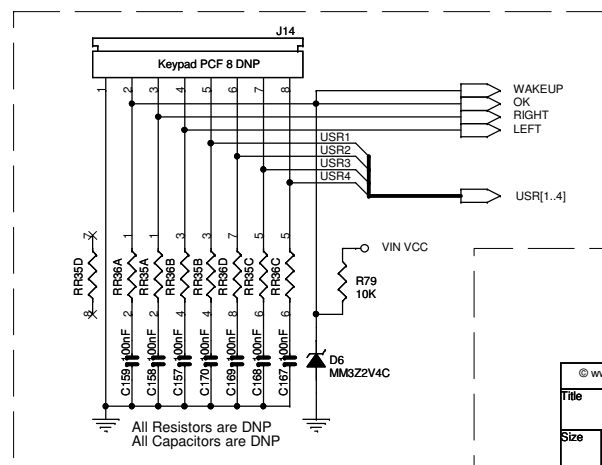
AD Reference Voltage



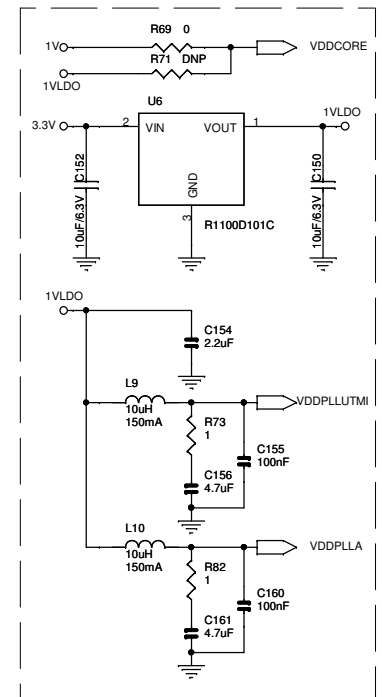
LED Block



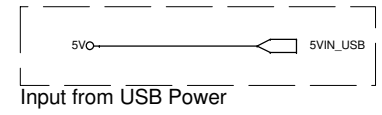
VIN & ANI Connector Block



[LEFT] [OK] [RIGHT] & User Buttons



1V Distribution



Input from USB Power

© www.mini-box.com 2010		Csemáth Géza 2010	
Title picoPC - PSU Block and User Interface			
Size	Document Number	Rev	
picoPC 1.1f		1.1f	
Date:	Sunday, February 27, 2011	Sheet	9 of 9